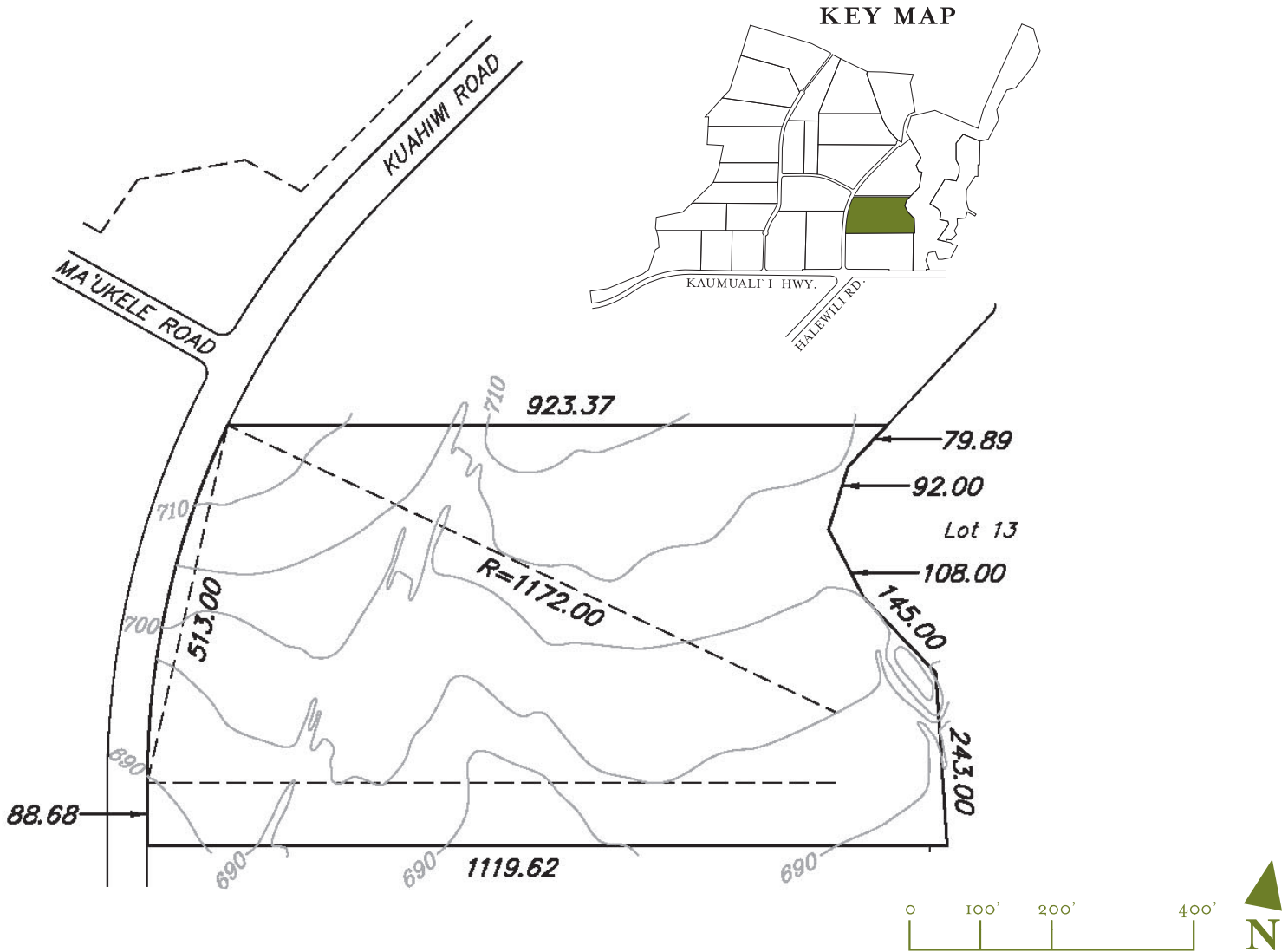




# Brydeswood Ranch

KAUAI · HAWAII

## LOT 2-11 13.754 Acres



Julie Hardie (R) (808) 652-0468  
 Susan Higgins (RA) (808) 346-7900

[BrydeswoodRanch.com](http://BrydeswoodRanch.com)



Sleeping Giant

Sotheby's INTERNATIONAL REALTY

The renderings in this brochure are for illustration only. The developer disclaims any warranty or promise about the location, views, size, height, layout, and specifications shown in this advertisement. The developer is not creating any lot or improving any street or amenity to the precise specifications of any rendering or other plans that may be shown. The specific features may vary from lot to lot. In some cases, the renderings depict cleared areas, an absence of plants and geographical features, or intentionally omit the neighboring properties for illustration only. They do not reflect how the actual project or surrounding areas will look. The listings of lots, prices, sizes, and information are all subject to prior sale, reservation, change by the developer, increase, and reduction. This is not an offer to sell, nor is it an obligation or contract of any kind. The developer is required to first market the lots in Phase III of the subdivision to Kauai farmers whose primary intention is to conduct agricultural activities, for at least 120 days after commencing marketing activities. All figures, facts, information and prices are approximate and are subject to change at any time. Unless you and the developer both sign a binding sales contract for a specific lot, you do not have a right to purchase a lot at any particular price. You are advised to obtain and read the public offering statement and subdivision registration required by the laws of the State of Hawaii. Despite the developer's efforts to provide accurate information in this advertisement, it is not possible to ensure that all information is up to date. The developer assumes no responsibility for any actions taken as a result of reading this advertisement. No content from this advertisement may be copied, republished, posted, or distributed in any way.

information are subject to change. Lots, prices, other amounts, and information are all subject to prior sale, reservation, change by the developer, increase, and reduction. This is not an offer to sell, nor is it an obligation or contract of any kind. The developer is required to first market the lots in Phase III of the subdivision to Kauai farmers whose primary intention is to conduct agricultural activities, for at least 120 days after commencing marketing activities. All figures, facts, information and prices are approximate and are subject to change at any time. Unless you and the developer both sign a binding sales contract for a specific lot, you do not have a right to purchase a lot at any particular price. You are advised to obtain and read the public offering statement and subdivision registration required by the laws of the State of Hawaii. Despite the developer's efforts to provide accurate information in this advertisement, it is not possible to ensure that all information is up to date. The developer assumes no responsibility for any actions taken as a result of reading this advertisement. No content from this advertisement may be copied, republished, posted, or distributed in any way. Courtesy to qualifying brokers.

